

Yucca Mountain
Nuclear Fuel Locations and Associated Rail Facilities

Rancho Seco Nuclear Generating Station, California

VII. RANCHO SECO NUCLEAR GENERATING STATION, CALIFORNIA

Facility Description

The Rancho Seco facility is located in southeast Sacramento County, about 25 miles southeast of downtown Sacramento. It was owned and operated by the Sacramento Municipal Utilities District (SMUD) between 1977 and 1989 and by the California Department of Water Resources/SMUD from 1989 to present. The 2,100 acre site was purchased in 1966. Now decommissioned, the plant operated from April 1975 to June 1989 and was closed by public vote in 1989, which was 19 years prior to the date that its operating license was set to expire. Over time, the plant has been partially converted for use as a public access park. As of 2009, the Nuclear Regulatory Commission authorized the release of the majority of the site for public use. Eleven acres of the property remain dedicated for the storage building that houses low level nuclear waste and the dry cask spent fuel storage facility.

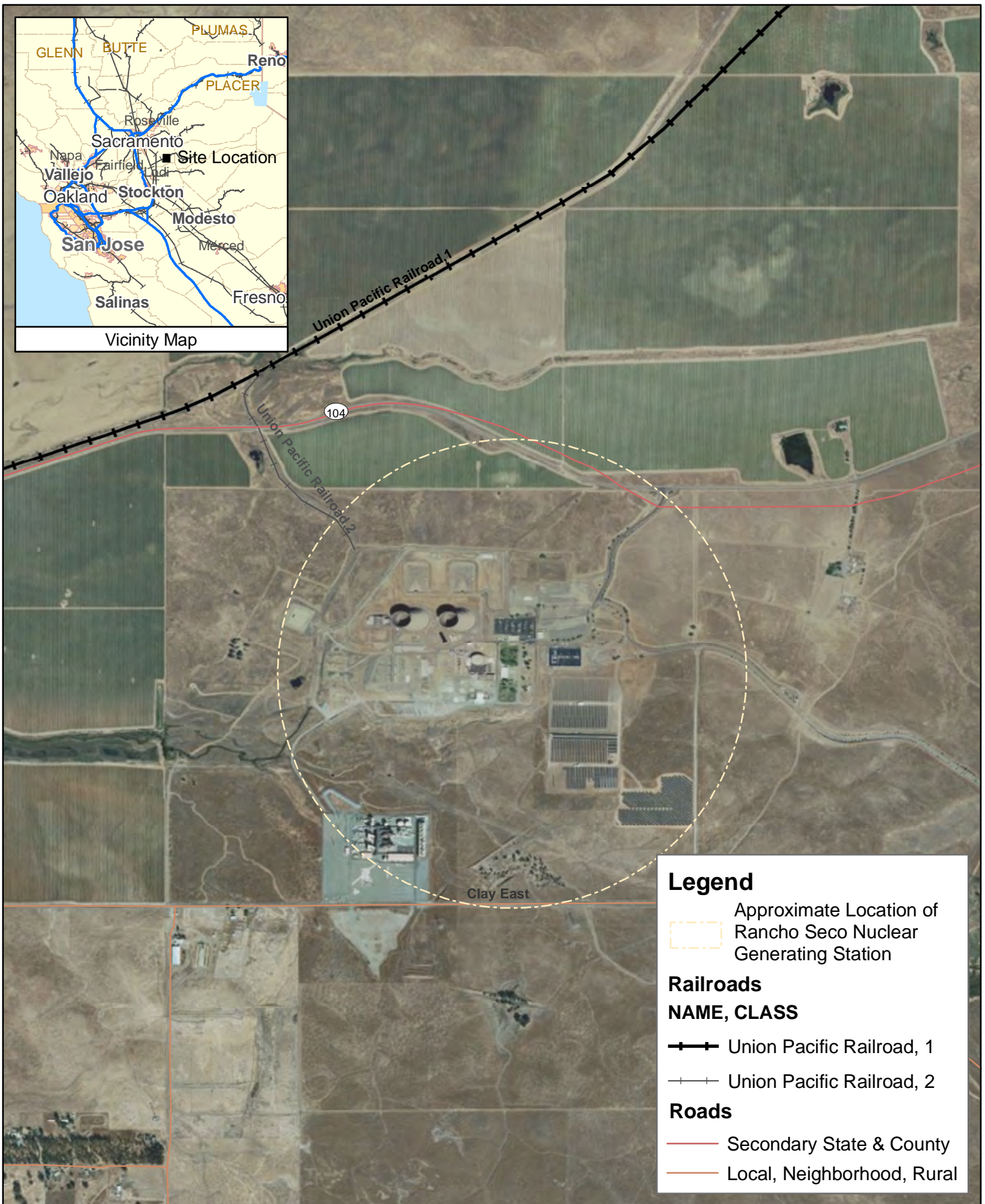
The first of the following maps entitled “**Rancho Seco Nuclear Generating Station**” shows the plant’s location south of state highway 104 and of the east/west running Union Pacific track. Population centers and at-grade road/railroad crossings in the vicinity are noted. The second map illustrates (at a larger scale) the plant itself and proximity to the adjacent track to the north.

This property is located on the Lone Subdivision, a 27 mile Union Pacific branch line that originates at Galt and ends in the town of Lone, California. The line is served by a thrice weekly local freight train. The main sources of traffic are lumber and various rock products from a quarry located at Clarkson. There is a spur line into the site from the main track. Freight train speed on the main track, which is located approximately two miles from the facility, is 25 miles per hour.

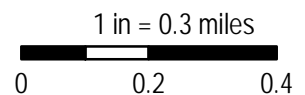
Rail Routes

Rancho Seco Nuclear Generating Station to Hazen Map - This facility is located on UP’s Lone Branch. The material would be transported westward to Galt which is the junction with the UP’s Valley Line between Stockton and Sacramento. Due to the track layout at Galt, the UP would move this traffic southward to the freight yard at Stockton to be placed into a northbound train en route through Galt and Sacramento to Roseville. At Roseville, the load would be placed into an eastward train, traverse Donner Pass and Reno en route to Hazen.

Rancho Seco Nuclear Generating Station to Caliente Map – UP would move this traffic as described above to Roseville. At that point, the loads would be handled eastward over Donner Pass and through Reno to Ogden thence southward to Salt Lake City an onward southwestward to Caliente.



RANCHO SECO NUCLEAR GENERATING STATION, CA





Legend		Railroads	Roads	City Areas
	Approximate Location of Rancho Seco Nuclear Generating Station	NAME, CLASS		POPULATION
	Crossing Number			
		Union Pacific Railroad, 1	Primary US and State Highways	Population is less than 10,000
		Union Pacific Railroad, 2	Secondary State and County	

RANCHO SECO NUCLEAR GENERATING STATION, CA

1 in = 2 miles

0 1 2



Legend

Probable Routes*

Railroads

- Burlington Northern Railway Company
- Union Pacific Railroad
- All Other Railroad Companies

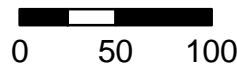
Nuclear Fuel Locations' Status

- Canceled
- Closed
- Open

* Represents the most "probable" direct route. Actual route to be determined through multiple agencies and stakeholders, N.I.C.

RANCHO SECO NUCLEAR GENERATING STATION TO HAZEN

1 in = 100 miles





RANCHO SECO NUCLEAR GENERATING STATION TO CALIENTE

1 in = 100 miles

